



INNOVATION HOMES



2016 HAYES PLAN

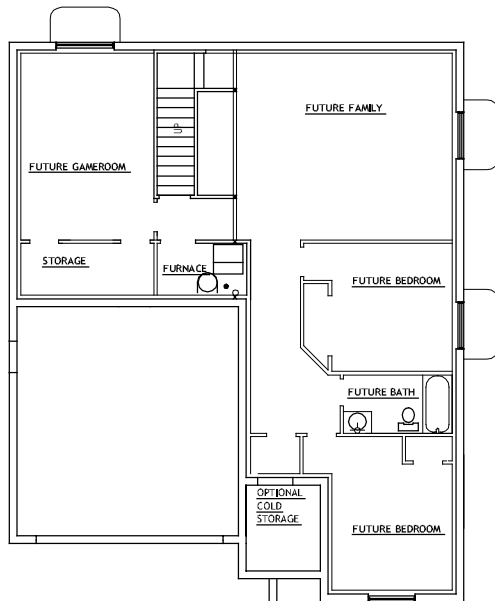
W/ BASEMENT

SQUARE FOOTAGE

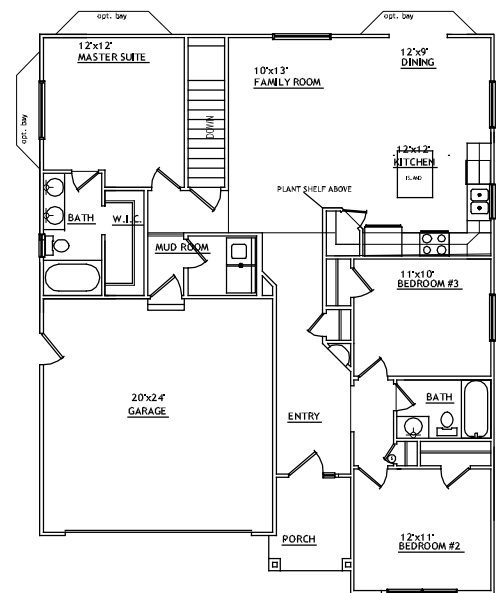
1299 Finished | 1280 Unfinished | 2579 Total

DIMENSIONS

39'-0" Width | 48'-0" Depth



BASEMENT LAYOUT



MAIN FLOOR LAYOUT

PLEASE NOTE: Square footage and measurements are approximate. All images of exteriors and floor plans are artist's renditions and may vary from actual product. Plans are subject to change to comply with local city ordinances. Final placement of home on lot is done at seller's discretion. All information on this sheet is subject to change without notice